



## SAFETY

### GLIDE S1

#### Breathable Slip-on Safety footwear

Glide is both youthful and stylish combined with first-class wearer comfort and highest slip resistance, thanks to its lightweight design, climate-optimized high-tech materials, & ergonomically designed out sole. Glide the ideal companion for the working day and beyond.

Upper	Nubuck Leather
Sole	Double Density PU
Outsole	High Density Grey PU
Midsole	Low Density Black PU
Insole	NonWoven Insole board Antistatic
Toecap	Steel
Lining	Two Color Mesh
Footbed	PU Moulded 3 Layered
Safety category	EN ISO 20345 : 2011 & IS 15298 (Part 2): 2016
Sample weight	900 gm. +- 50g.   Size 8.
Size range	UK 5-12

## BORN TOUGH BUILT RELIABLE



#### GENERAL & UPPER

NUBUCK LEATHER	SUPER LIGHT WEIGHT	BREATHABLE UPPER	SLIP ON SHOE	ODOR REDUCING

#### TOE CAP

STEEL TOE

WIDE TOE CAP

#### LINING

TEXTILE LINING

#### IN SOCK

PU MOULDED 3 LAYERED SOCKS

CUSHION HEEL & ARCH SUPPORT



#### SOLE

DOUBLE DENSITY

HEEL SHOCK ABSORPTION

RESISTANT SOLE

ANTISTATIC

RESISTANT SOLE

SLIP RESISTANT

PENETRATION OPTIONAL

ELECTRICAL HAZARD OPTIONAL



**SAFETY**

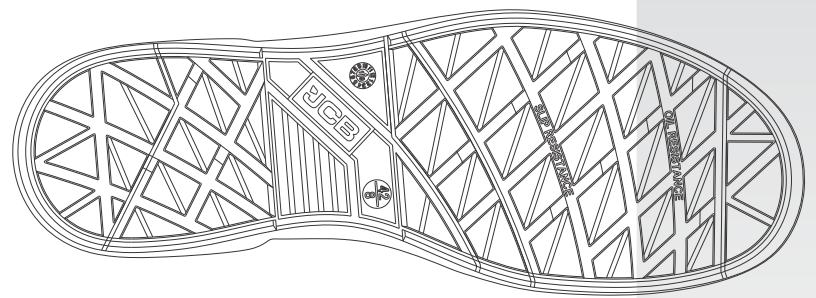
**GLIDE S1**

**Industries:**  
General, Engineering, Automobile, Construction

**Environments:**  
Dry environment, Extreme slippery surfaces, Uneven surfaces, upto 130° c

**Maintenance instructions:**

To extend the life of your shoes, we recommend to clean them regularly and to protect them with adequate products. Do not dry your shoes on a radiator/Hair Dryer nor nearby a heat source.



Description		Measure unit	Result	IS 15298(Part 2):2016 EN ISO 20345
<b>Upper Leather</b>	Upper: Tear Strength	n/mm <sup>2</sup>	265	≥ 120
	Upper: Tensile Strength	n/mm <sup>2</sup>	24	≥ 15
	Upper: permeability to water vapor	mg/cm <sup>2</sup> /h	1.2	≥ 0.8
	Upper: water vapor coefficient	mg/cm <sup>2</sup>	17.9	≥ 15
<b>Lining</b>	<b>3D-Mesh</b>			
	Lining: permeability to water vapor	mg/cm <sup>2</sup> /h	31.1	≥ 2
	Lining: water vapor coefficient	mg/cm <sup>2</sup>	180	≥ 20
<b>Footbed</b>	<b>Footbed</b>			
	Footbed: abrasion resistance	25,600 Cycles	no hole	no hole
<b>Outsole</b>	<b>SOLE:PU PU</b>			
	Outsole abrasion resistance (volume loss)	mm <sup>3</sup>	91	≤ 150
	Flexing resistance (30,000 cycles)	mm	no growth	≤ 4
	Upper outsole bond strength	n/mm	4.15	≥ 4.0
	Interlayer bond strength	n/mm	4.05	≥ 4.0
	Outsole slip resistance SRA: heel	friction	0.51	≥ 0.28
	Outsole slip resistance SRA: flat	friction	0.37	≥ 0.32
	Outsole slip resistance SRB: heel	friction	0.18	≥ 0.13
	Outsole slip resistance SRB: flat	friction	0.17	≥ 0.18
	Antistatic value	MegaOhm	125	0.1 - 1000
	Heel energy absorption	Joules	≥30	≥ 20
	Resistance fuel oil	%	≤ 1.6	≤ 12
	Hot Contact at 130°C for 1 min.	Centigrade	No melt	No melt
	<b>Toecap</b>	Impact resistance toecap (clearance after impact 200J)	mm	15.6
Compression resistance toecap (clearance after compression 15kN)		mm	14.7	≥ 14

*Our shoes are constantly evolving, the technical data above may change. All product names and brand JCB, are registered and may not to be or reproduced in any format, without written consent from us.*