



SAFETY

EXVOLT S3 EH

Breathable Leather Ankle Safety Boot

Exvolt is our iconic & stylish leather safety boot, offering very high wearer comfort & highest slip resistance, thanks to its lightweight design, tropicalized high-tech materials, and ergonomically designed out sole. Exvolt the ideal companion for the 24X7 working.

Upper	Apollo leather
Sole	Double Density PU Grey Outsole
Toecap	Composite
Insole	Penetration Resistant Textile >1100 Newton
Lining	Mesh
Footbed	PU Moulded with Memory Foam in Heel
Safety category	EN ISO 20345 : 2011 & IS 15298 (Part 2): 2016
Sample weight	1075 gm. +- 50g. Size 8.
Size range	UK 5-12

**BORN TOUGH
BUILT RELIABLE**



GENERAL & UPPER



ANKLE BOOT



LEATHER UPPER



SUPER LIGHT WEIGHT



BREATHABLE UPPER



LACE UP



ODOR REDUCING



WATER RESISTANT

TOE CAP



COMPOSITE TOE



WIDE TOE CAP

LINING



TEXTILE LINING

IN SOCK



PU MOULDED SOCKS



CUSHION HEEL & ARCH SUPPORT



SOLE



DOUBLE DENSITY



HEEL SHOCK ABSORPTION



RESISTANT SOLE



ELECTRICAL HAZARD



RESISTANT SOLE



SLIP RESISTANT

CAUTION: Ensure no metal component embedded in the sole as it may reduce the electrical insulative properties.



SAFETY

EXVOLT S3 EH

Industries:

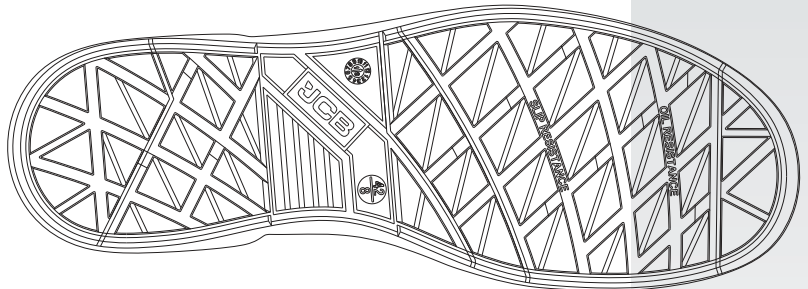
General, Engineering, Automobile, Electrician

Environments:

Dry environment, Extreme slippery surfaces, Uneven surfaces, upto 130° c

Maintenance instructions:

To extend the life of your shoes, we recommend to clean them regularly and to protect them with adequate products. Do not dry your shoes on a radiator/Hair Dryer nor nearby a heat source.



Description		Measure unit	Result	IS 15298(Part 2):2016 EN ISO 20345
Upper Leather	Upper: Tear Strength	n/mm ²	262	≥ 120
	Upper: Tensile Strength	n/mm ²	26	≥ 15
	Water Penetration 60 Minutes	0.0 g	0.16	≤ 0.2
	Water Absorption	%	26%	≤ 30
	Upper: permeability to water vapor	mg/cm ² /h	1.19	≥ 0.8
	Upper: water vapor coefficient	mg/cm ²	17.6	≥ 15
Lining	3D-Mesh			
	Lining: permeability to water vapor	mg/cm ² /h	31.1	≥ 2
	Lining: water vapor coefficient	mg/cm ²	180	≥ 20
	Lining: abrasion resistance	25,600 Cycles	no hole	no hole
Footbed	Footbed			
	Footbed: abrasion resistance	cycles	450	≥ 400
Outsole	SOLE:PU PU			
	Outsole abrasion resistance (volume loss)	mm ³	91	≤ 150
	Flexing resistance (30,000 cycles)	mm	no growth	≤ 4
	Upper outsole bond strength	n/mm	4.15	≥ 4.0
	Interlayer bond strength	n/mm	4.05	≥ 4.0
	Outsole slip resistance SRA: heel	friction	0.41	≥ 0.28
	Outsole slip resistance SRA: flat	friction	0.39	≥ 0.32
	Outsole slip resistance SRB: heel	friction	0.17	≥ 0.13
	Outsole slip resistance SRB: flat	friction	0.18	≥ 0.18
	Electrical Insulative (ASTM 2413)	Kv	18Kv	< 0.37 mA
	Heel energy absorption	Joules	≥30	≥ 20
	Resistance fuel oil	%	≤ 1.6	≤ 12
	Hot Contact at 130°C for 1 min.	Centigrade	No melt	No melt
Toecap				
	Impact resistance toecap (clearance after impact 200J)	mm	19.0	≥ 14
	Compression resistance toecap (clearance after compression 15kN)	mm	14.7	≥ 14

Our shoes are constantly evolving, the technical data above may change. All product names and brand JCB, are registered and may not to be or reproduced in any format, without written consent from us.

SAFETY FOOTWEAR
 info@jcbfootwear.in
 www.jcbfootwear.in

INDUSTRIAL PROFESSIONAL OCCUPATIONAL

**ENGINEERED
IN UK**



IS 15298
(PART 2)
CM/L-4867488